

TTP-2410M/346M/644M

TTP-246M Plus/344M Plus

THERMAL TRANSFER / DIRECT THERMAL BAR CODE PRINTER

Parts List

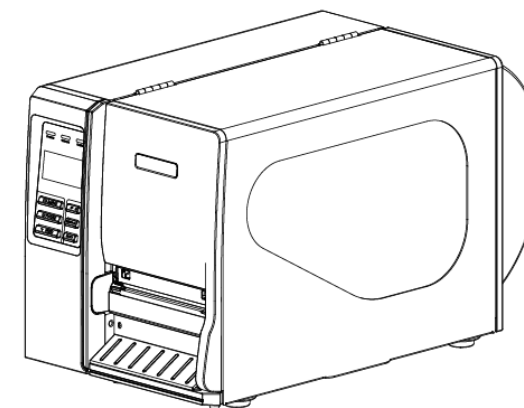
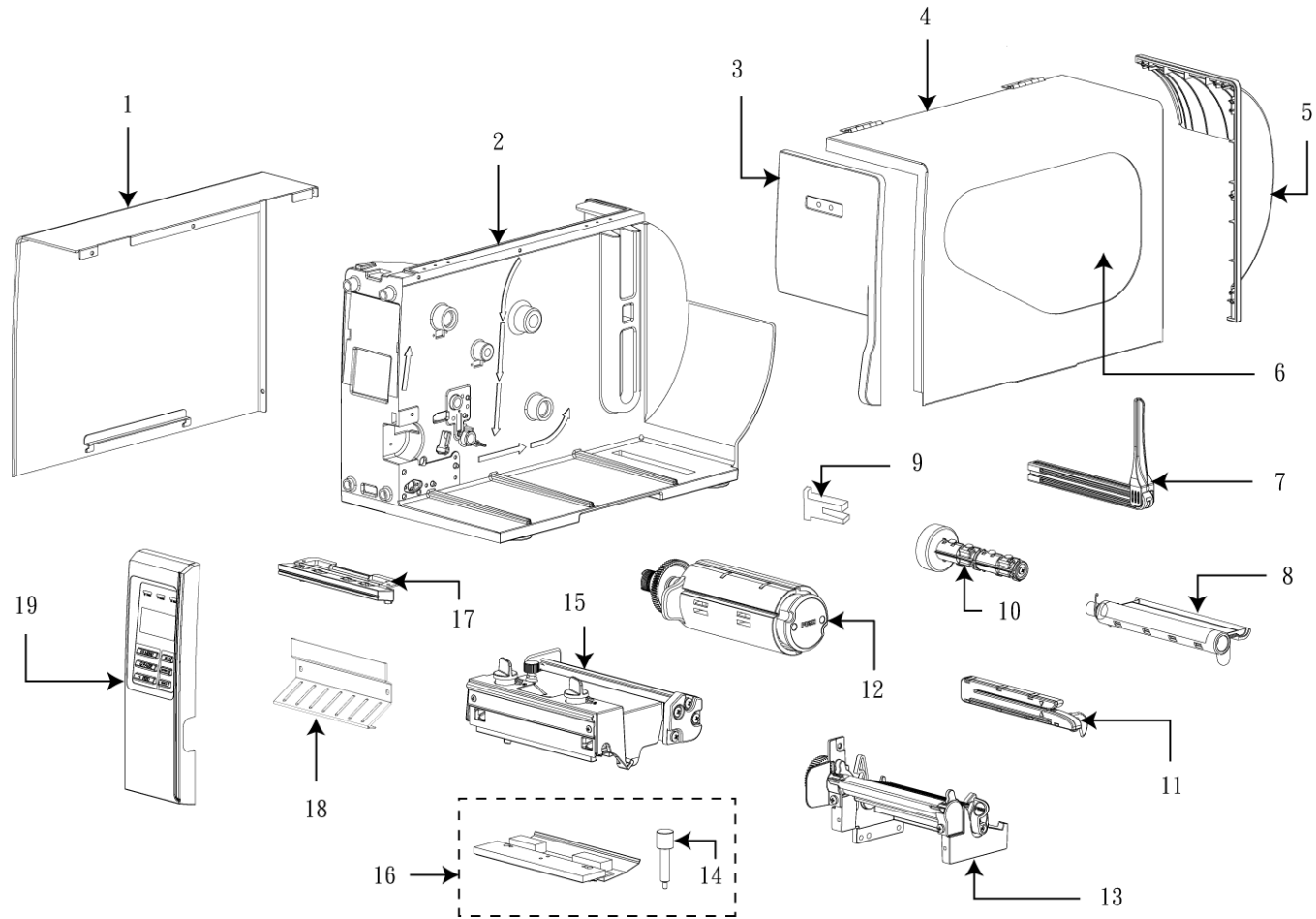


TABLE OF CONTENT

Part List	3
1 Main Printer Assemblies	3
2 LCD Panel Assembly	5
3 Print Engine Lower Mechanism Assembly	6
4 Ribbon Rewind Spindle Assembly	7
5 Ribbon Supply Spindle Assembly & Damper Assembly	8
6 Electronics Maintenance Kit & Drive System	9
7 Option and Accessories	10
8 Care Label Cutter Module	11
Update History	12

Part List

1 Main Printer Assemblies



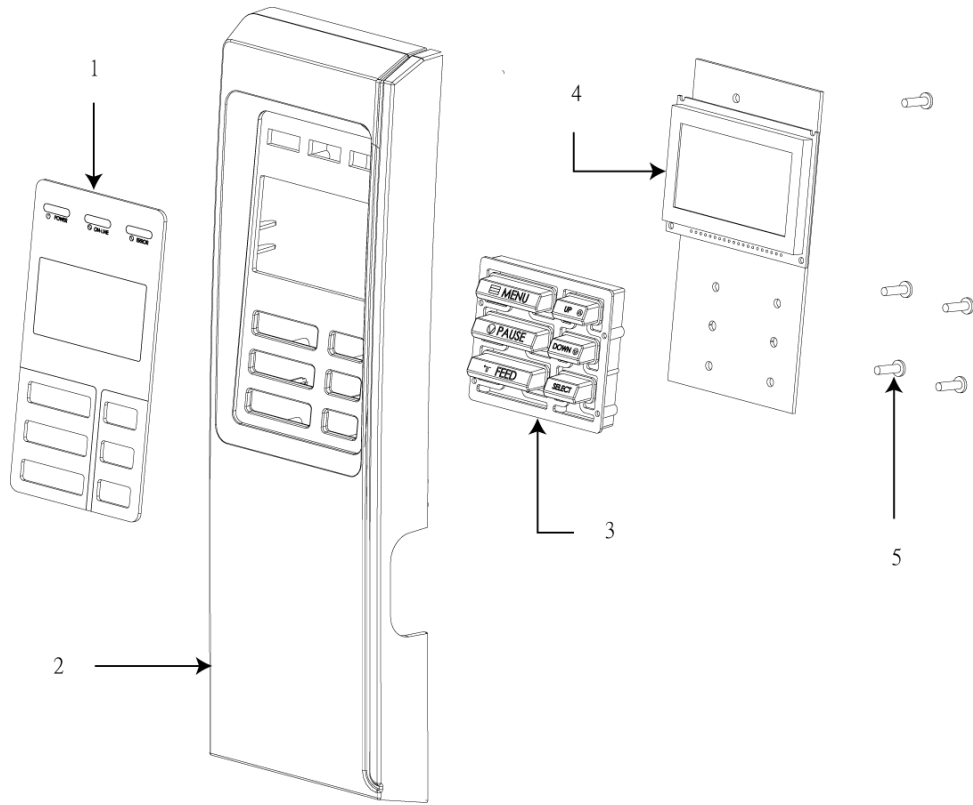
No.	Part No.	Description	Remark	Spare parts
1	98-0240031-10LF	Electronics cover	1 pc	
2	N/A	Mainframe	1 pc	
3	30-0240015-10LF	Cover, front	1 pc	
4	98-0240020-0ALF	Top right side cover	1 pc	
5	30-0240017-10LF	Cover, rear	1 pc	
6	N/A	Media view window	1 pc	
7	98-0240097-00LF	Media supply spindle assembly	1 pc	
8	98-0240021-00LF	Media damper assembly	1 set	
9	98-0240026-00LF	Ribbon sensor assembly	1 pc	1%
10	98-0240023-00LF	Ribbon supply spindle assembly	1 set	
11	98-0240029-00LF	Media sensor assembly	1 pc	1%
12	98-0240024-00LF	Ribbon rewind spindle assembly (Including gear)	1 set	1%
13	98-0240028-00LF	Print engine lower mechanism assembly (Including platen roller assembly)	1 set	1%
14	32-0240053-00LF	Screw, M3x6 (For TPH), MOQ 5 pcs	1 pc	

15	98-0240027-00LF	Print engine upper mechanism assembly (Including print head burn line adjustable bracket assembly)	1 set	
16	98-0240067-10LF	Print head module (TTP-2410M)	1 set (RMA)	3%
	98-0240068-10LF	Print head module (TTP-346M)		
	98-0240069-00LF	Print head module (TTP-246M Plus)		
	98-0240070-00LF	Print head module (TTP-344M Plus)		
	98-0240071-10LF	Print head module (TTP-644M)		
N/S	72-0240003-20LF	Print head harness (TTP-2410M/346M/644M)	1 pc	
	72-0240012-10LF	Print head harness (TTP-246M Plus/344M Plus)		
17	30-0240013-00LF	Front lower plastic cover	1 pc	
18	32-0240060-10LF	Lower front panel	1 pc	
19	98-0240046-00LF	LCD panel assembly (Including LCD panel board assembly)	1 set	

N/A : Not available separately

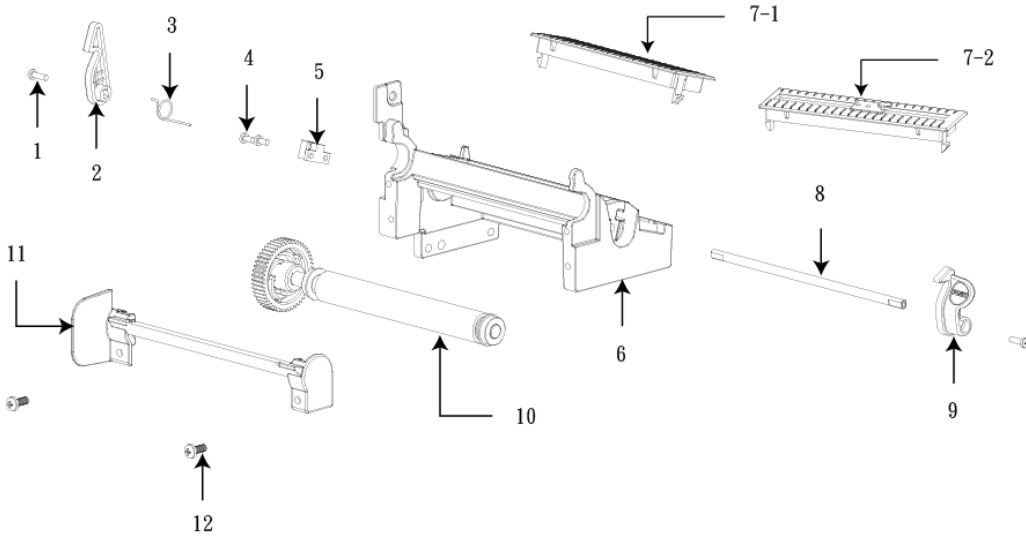
N/S : Not shown

2 LCD Panel Assembly



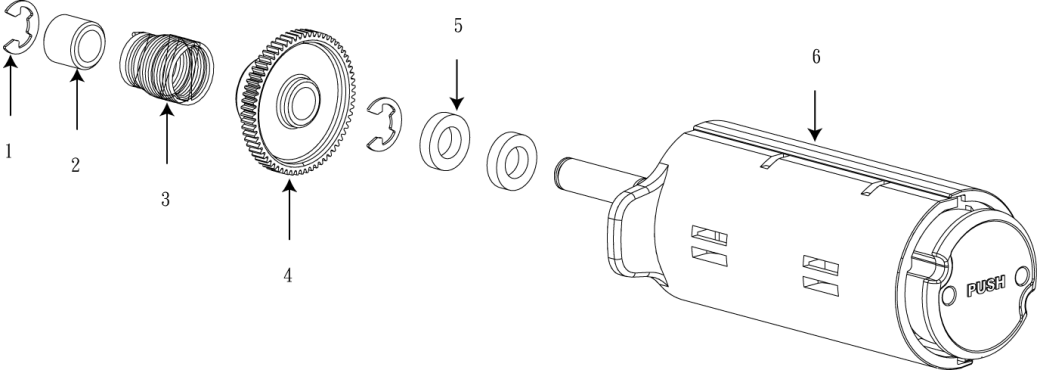
No.	Part No.	Description	Remark	Spare parts
1	30-0240012-00LF	Panel plate	1 pc	
2	30-0240010-00LF	Panel cover	1 pc	
3	30-0240011-00LF	Keypad	1 pc	
4	98-0240014-10LF	LCD panel board assembly	1 pc	1%
5	37-1403008-34LF	Screw, TP3*8, MOQ 50 pcs	5 pcs	

3 Print Engine Lower Mechanism Assembly



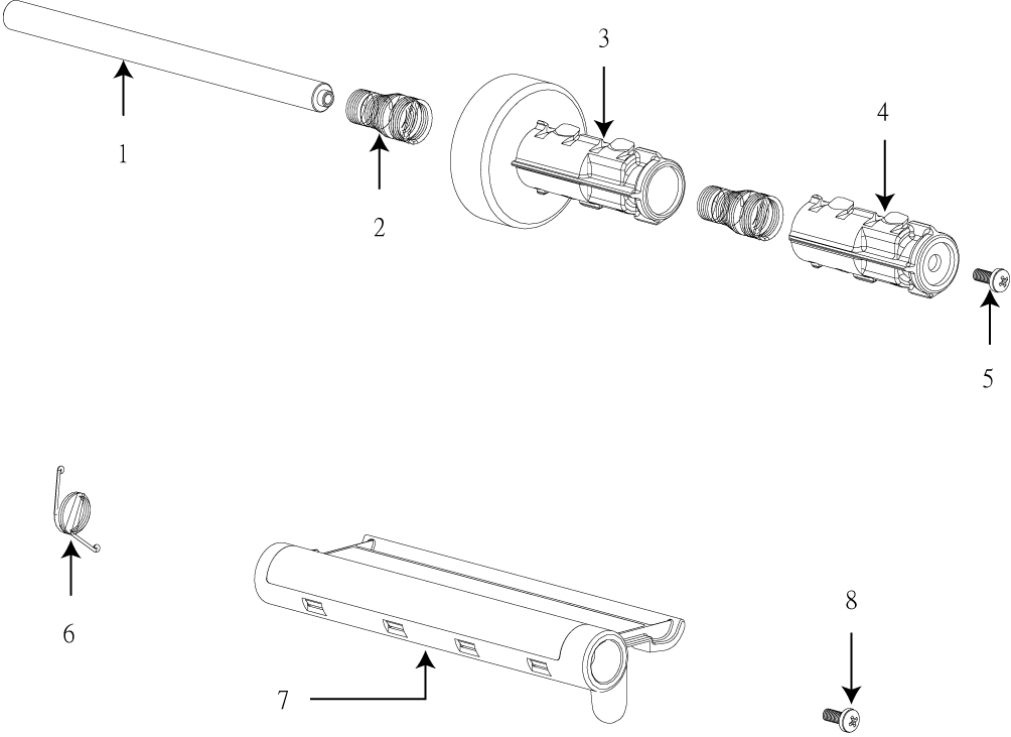
No.	Part No.	Description	Remark	Spare parts
1	37-1502510-34LF	Screw, M2.5*10, MOQ 50 pcs	2 pcs	
2	30-0240032-20LF	Print head release lever (Left), MOQ 5 pcs	1 pc	
3	32-0240032-10LF	Spring torsion, MOQ 5 pcs	1 pc	
4	37-1503006-G4LF	Screw, M3*6, MOQ 50 pcs	2 pcs	
5	98-0240034-00LF	Print head open sensor	1 pc	
6	32-0240029-10LF	Print engine lower frame	1 pc	
7-1	30-0240033-10LF	Media path cover	1 pc	
7-2	98-0240081-00LF	Media path cover (For care label/ Option)		
8	32-0240031-10LF	Shaft	1 pc	
9	30-0240031-20LF	Print head release lever (Right), MOQ 5 pcs	1 pc	
10	98-0240030-00LF	Platen roller assembly	1 set	3%
11	32-0240030-00LF	Platen holder	1 pc	
12	37-1504012-54LF	Screw, M4*12, MOQ 50 pcs	2 pc	

4 Ribbon Rewind Spindle Assembly



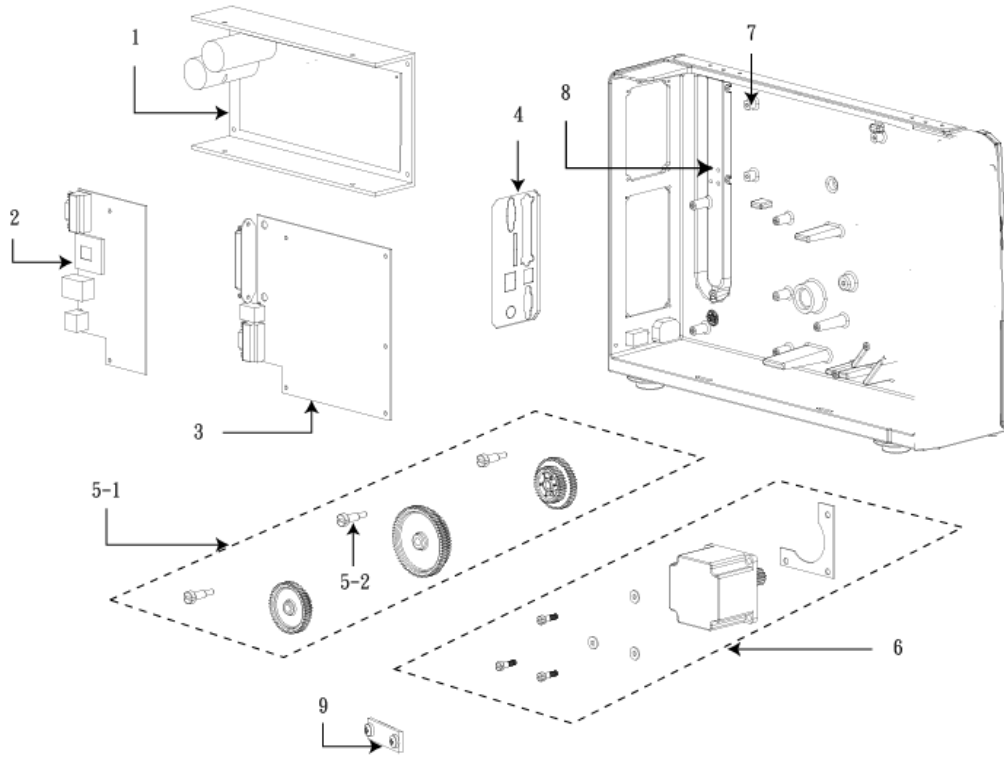
No.	Part No.	Description	Remark	Spare parts
1	37-3410200-02LF	E-ring, ID10*OD20*T0.6mm, MOQ 10 pcs	2 pcs	
2	32-0240036-00LF	Bearing	1 pc	
3	32-0240014-00LF	Spring, MOQ 5 pcs	1 pc	
4	30-0240008-00LF	Gear	1 pc	1%
5	32-0240037-00LF	Bearing	2 pcs	
6	98-0240057-00LF	Ribbon rewind spindle	1 set	

5 Ribbon Supply Spindle Assembly & Damper Assembly



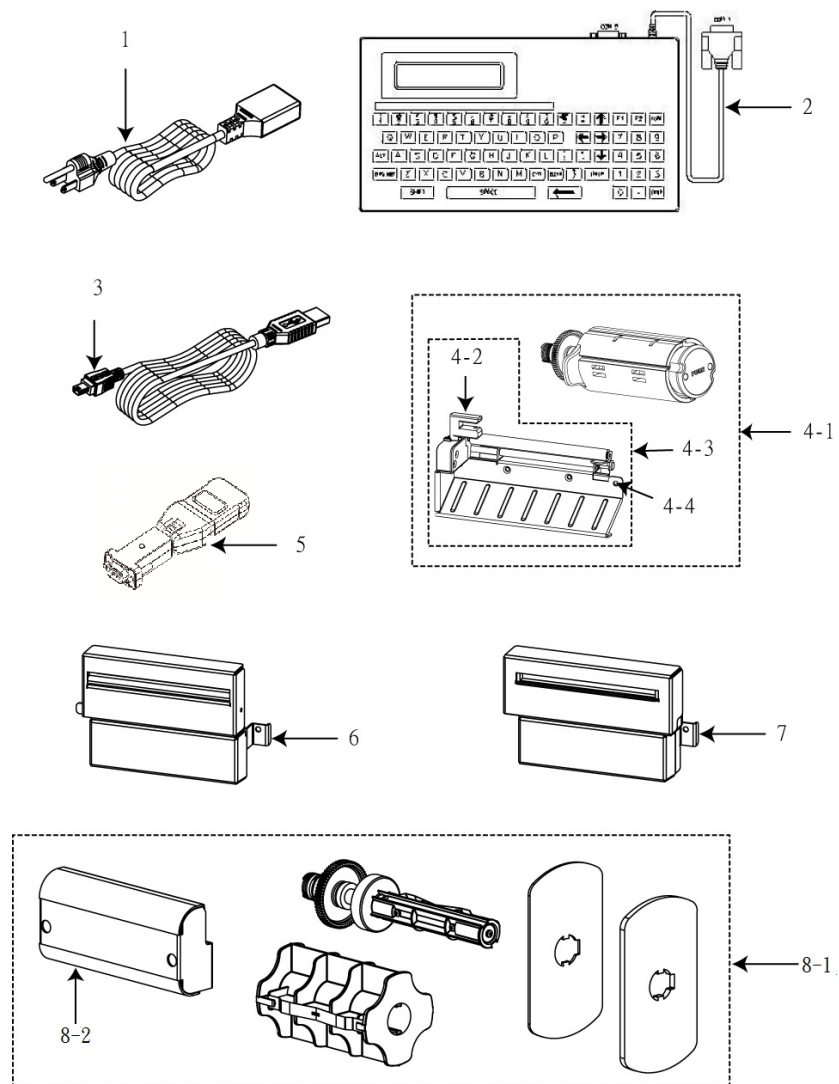
No.	Part No.	Description	Remark	Spare parts
1	32-0240012-00LF	Ribbon supply spindle shaft	1 pc	
2	32-0240011-00LF	Spring, ribbon supply spindle, MOQ 5 pcs	2 pcs	
3	98-0240059-00LF	Ribbon supply spindle front cover (Including magnet module)	1 pc	
4	30-0240024-00LF	Ribbon supply spindle rear cover	1 pc	
5	37-1504008-54LF	Screw, M4*8, MOQ 50 pcs	1 pc	
6	32-0240009-00LF	Spring, damper, MOQ 5 pcs	1 pc	
7	98-0240058-00LF	Media damper	1 pc	
8	37-1504008-54LF	Screw, M4*8, MOQ 50 pcs	1 pc	

6 Electronics Maintenance Kit & Drive System



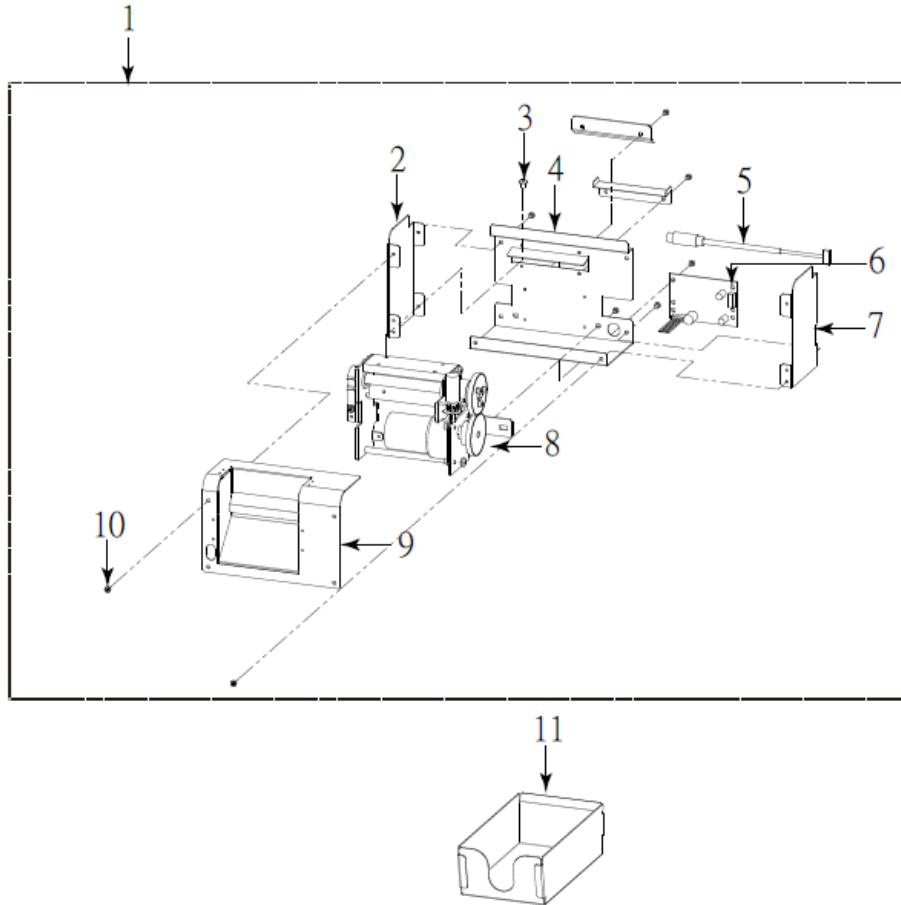
No.	Part No.	Description	Remark	Spare parts
1	98-0240084-00LF	Power supply unit (TTP-2410M/346M/644M)	1 set	3%
	62-0180001-10LF	Power supply unit (TTP-246M Plus/344M Plus)		
2	98-0240044-11LF	Multi-interface board assembly (Dealer option for TTP-246M Plus/344M Plus)	1 set	
	98-0240044-10LF	GPIO with multi-interface board assembly (Dealer option for TTP-246M Plus/344M Plus; Factory option for TTP-2410M/346M/644M)	1 set	
3	98-0240013-80LF	Main board (TTP-2410M/346M)	1 set	3%
	98-0240013-81LF	Main board (TTP-246M Plus/344M Plus)		
	98-0240013-82LF	Main board (TTP-644M)		
4	32-0240006-21LF	Interface plate	1 pc	
5-1	98-0240017-00LF	Gear set	1 set	1%
5-2	32-0240056-20LF	Screw for gear, MOQ 20 pcs		
6	98-0240033-00LF	Stepping motor kit	1 set	1%
7	37-1503010-34LF	Screw for power supply unit, M3*10, MOQ 50 pcs	2 pcs	
8	37-1403015-32LF	Screw for media supply spindle, MOQ 50 pcs		
9	98-0240045-00LF	Ribbon encoder sensor assembly	1 set	

7 Option and Accessories



No.	Part No.	Description	Remark	Spare parts
1	72-0180100-00LF	Power cord / US	Standard	
	72-0180100-01LF	Power cord / EU 90 degree	Option	
	72-0180100-02LF	Power cord / UK	Option	
	72-0180100-03LF	Power cord / AU	Option	
	72-0180000-04LF	Power cord / JP	Option	
2	99-0230001-00LF	KU-007 Plus, programmable keyboard unit	Option	
	99-117A001-00LF	KP-200 Plus, stand-alone keyboard unit	Option	
3	72-0010030-00LF	USB cable (1500 mm)	Standard	
	72-0010001-00LF	Parallel port cable	Option	
	72-0050002-01LF	RS-232 cable	Option	
4-1	98-0240019-10LF	Peel-off kit (Including internal rewind + peel-off module)	Dealer Option	
4-2	98-0240060-00LF	Peel-off sensor	Option	
4-3	98-0240076-00LF	Peel-off sensor ass'y with front panel	Option	
4-4	37-1504008-84LF	Screw for peel-off module, MOQ 50 pcs	Option	
5	99-125A041-00LF	External Bluetooth module (RS-232 interface)	Option	
6	98-0240035-00LF	Regular cutter module (Guillotine cutter)	Option	
7	98-0240035-01LF	Heavy duty cutter module (Rotary cutter)	Option	
8-1	98-0240063-00LF	Internal rewinding kit (Including internal rewind + label redirect front panel)	Dealer Option	
8-2	32-0240065-00LF	Label redirect front panel	Option	

8 Care Label Cutter Module



No.	Part No.	Description	Remark	Spare parts
1	98-0240035-03LF	Care label cutter module	Option	
2	32-0240071-00LF	Top left side cover	1 pc	
3	37-1504008-G4LF	Screw, M4*8, MOQ 50 pcs	2 pcs	
4	32-0240073-00LF	Back cover	1 pc	
5	72-0240025-00LF	Care label cutter cable	1 pc	
6	98-0240078-10LF	Label cutter control board	1 set	1%
7	32-0240072-00LF	Top right side cover	1 pc	
8	32-0240067-00LF	Care label cutter	1 pc	
9	98-0240079-00LF	Front cover module	1 pc	
10	37-1503004-G2LF	Screw, M3*L4, MOQ 50 pcs (For back cover*8 pcs & front cover module*4 pcs & control board*4 pcs)	16 pcs	
11	98-0240087-00LF	Catch tray (For care label cutter module)	Option	

Update History

Date	Content	Editor
2008/6/23	Revise the TTP-644M print head harness part no.	Camille Pao
2008/7/25	Revise the External wireless print server part no.	Camille Pao
2008/8/19	Revise the main board part no.	Camille Pao
2008/9/8	Revise the P/N for USB cable	Camille Pao
2008/9/12	Add the P/N for peel-off sensor ass'y with front panel	Camille Pao
2008/10/17	Add label redirect front panel part number	Camille Pao
2008/11/20	Revise section 6 drawing	Camille Pao
2008/12/30	Revise TP3*8 screw part no. from 37-1203008-34LF to 37-1403008-34LF	Camille Pao
2008/12/31	Revise media path cover part number	Camille Pao
2009/1/6	Revise section 7	Camille Pao
2009/3/18	Remove external wireless print server part no. Revise stand-alone keyboard unit from KP-200 to KP-200 Plus	Camille Pao
2009/4/14	Revise LCD panel assembly part number	Camille Pao
2009/5/21	Revise print head harness (TTP-2410M/346M/644M) P/N from 72-0240003-00LF to 72-0240003-10LF	Camille Pao
2009/6/18	Revise peel-off kit P/N from 98-0240019-00LF to 98-0240019-10LF	Camille Pao
2009/6/24	* Revise print head harness (TTP-246M Plus/344M Plus) P/N from 72-0240012-00LF to 72-0240012-10LF * Revise main board P/N from 98-0240013-10LF/-11LF/-12LF to 98-0240013-20LF/-21LF/-22LF	Camille Pao
2009/12/21	Revise top right side cover part number from 98-0240032-00LF to 98-0240020-0ALF	Camille Pao
2010/1/20	Revise TTP-644M main board ass'y P/N from 98-0240013-22LF to 98-0240013-20LF	Camille Pao
2010/3/18	Revise Multi-interface board assembly P/N from 98-0240040-11LF to 98-0240044-01LF	Camille Pao

2010/4/15	<ul style="list-style-type: none"> * Add minimum order quantity for some items * Add screw for peel-off module P/N 37-1504008-84LF * Add screw for gear P/N 32-0240056-10LF * Add screw for power supply unit P/N 37-1503015-34LF * Add screw for media supply spindle P/N 37-1403015-32LF 	Camille Pao
2010/4/22	<ul style="list-style-type: none"> * Revise the power supply unit (TTP-2410M/346M/644M) P/N from 62-0240001-00LF to 98-0240084-00LF * Revise the screw P/N (for power supply unit) from 37-1503015-34LF to 37-1503010-34LF 	Camille Pao
2010/5/12	<ul style="list-style-type: none"> * Revise power cord(US) P/N from 72-0050001-00LF to 72-0180100-00LF * Revise power cord(EU 90D) P/N from 72-0050007-10LF to 72-0180100-01LF * Remove power cord(EU 180D) P/N 2-0050007-00LF * Revise power cord(UK) P/N from 72-0050010-10LF to 72-0180100-02LF * Revise power cord(AU) P/N from 72-0050011-10LF to 72-0180100-03LF * Revise power cord(JP) P/N from 72-0180003-00LF to 72-0180100-04LF * Revise the screw P/N (For gear) from 32-0240056-10LF to 32-0240056-20LF 	Camille Pao
2010/7/20	<ul style="list-style-type: none"> * Revise print head module (TTP-644M) P/N from 98-0240071-00LF to 98-0240071-10LF 	Camille Pao
2010/8/27	<ul style="list-style-type: none"> * Revise print head module (TTP-2410M) P/N from 98-0240067-00LF to 98-0240067-10LF * Revise print head module (TTP-346M) P/N from 98-0240068-00LF to 98-0240068-10LF 	Camille Pao
2010/9/2	Add ribbon near end sensor assembly P/N 98-0240045-00LF in section 6	Camille Pao
2010/10/12	Remove the media view window P/N	Camille Pao
2010/11/17	Revise main board P/N from 98-0240013-20LF/21LF to 98-0240013-40LF/41LF	Camille Pao
2011/1/6	<ul style="list-style-type: none"> * Revise the main board P/N from 98-0240013-40/41LF to -50LF/51LF * Add the main board P/N 98-0240013-52LF for TTP-644M 	Camille Pao
2011/1/25	Modify TSC address	Camille Pao
2011/3/18	<ul style="list-style-type: none"> *Add care label cutter module P/N *Add catch tray P/N 	Camille Pao

2011/3/25	Add care label path cover P/N (98-0240081-00LF/ Option)	Camille Pao
2011/3/29	Modify print head release lever P/Ns from -00LF to -10LF	Camille Pao
2011/4/22	* Modify print engine lower frame P/N from 32-0240029-00LF to 32-0240029-10LF	Camille Pao
	* Modify interface plate P/N from 32-0240006-10LF to 32-0240006-20LF	Camille Pao
2011/6/8	* Modify main board P/N from 98-0240013-50/51/52LF to 98-0240013-60LF/61/62LF * Modify interface plate P/N from 32-0240006-20LF to 32-0240006-21LF * Modify print head harness(TTP-2410M/346M/644M) P/N from 72-0240003-10LF to 72-0240003-20LF	Camille Pao
2011/6/16	* Modify the 98-0240045-00LF description from “ribbon near end sensor” to “ribbon encoder sensor and add this sensor drawing on section 6.	Camille Pao
2011/7/11	* Modify lower front panel P/N from 32-0240060-00LF to 32-0240060-10LF * Modify electronics cover P/N from 98-0240031-00LF to 98-0240031-10LF	Camille Pao
2011/9/30	* Modify the main board P/N from 98-0240013-60LF/61/62LF to 98-0240013-70LF/71/72LF * Modify the spring torsion P/N from 32-0240032-00LF to 32-0240032-10LF	Camille Pao
2011/10/4	*Modify the section 7 *Add the section 8 (care label cutter module)	Cinya Wu
2013/1/30	* Modify the main board P/N from 98-0240013-70LF/71LF/72LF to 98-0240013-80LF/81LF/82LF * Modify the external Bluetooth module P/N	Camille Pao
2013/5/14	* Modify multi-interface board assembly P/N from 98-0240044-01LF to 98-0240044-11L * Modify GPIO with multi-interface board assembly P/N from 98-0240044-00LF to 98-0240044-10L * Modify cover(front) P/N from 30-0240015-00LF to 30-0240015-10LF * Modify cover(rear) P/N from 30-0240017-00LF to 30-0240017-10LF	Camille Pao
2013/7/15	* Modify print head release lever (Left) P/N from 30-0240032-10LF to 30-0240032-20LF * Modify print head release lever (Right) P/N from	Camille Pao

	30-0240031-10LF to 30-0240031-20LF	
2013/7/31	Modify media supply spindle assembly P/N from 98-0240022-00LF to 98-0240022-10LF	Camille Pao
2014/5/20	Modify media supply spindle assembly P/N from 98-0240022-10LF to 98-0240097-00LF	Camille Pao



TSC Auto ID Technology Co., Ltd.

Corporate Headquarters

9F., No.95, Minquan Rd., Xindian Dist.,
New Taipei City 23141, Taiwan (R.O.C.)

TEL: +886-2-2218-6789

FAX: +886-2-2218-5678

Web site: www.tscprinters.com

E-mail: printer_sales@tscprinters.com
tech_support@tscprinters.com

Li Ze Plant

No.35, Sec. 2, Ligong 1st Rd., Wujie Township,
Yilan County 26841, Taiwan (R.O.C.)

TEL: +886-3-990-6677

FAX: +886-3-990-5577